

# WAC LIGHTING

## 4" Low Voltage

### New Construction Non-IC Housing

Model & Product

HR-8402E 4in Electronic Low Voltage New Construction Non-IC Housing

Fixture Type: \_\_\_\_\_

Catalog Number: \_\_\_\_\_

Project: \_\_\_\_\_

Location: \_\_\_\_\_

Example: **HR-8402E**

#### DESCRIPTION

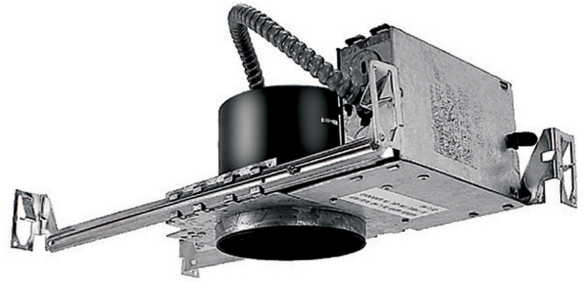
Engineered for high-performance in a compact fixture, 4" Low Voltage Recessed Downlights are styled with form and function. Available with a variety of decorative adjustable and Wet Location trim options are available.

#### FEATURES

- Integral electronic transformer
- J-Box and transformer accessible through ceiling
- Advanced auto-reset, soft start and short circuit protection features
- Supplied thermal protector protects against over-lamping
- Transformer included
- 5 year warranty

#### SPECIFICATIONS

<b>Construction</b>	20 gauge galvanized steel
<b>Power:</b>	50W
<b>Input:</b>	120 VAC,50/60Hz
<b>Dimming:</b>	ELV: 100-10%
<b>Light Source:</b>	Halogen
<b>Mounting:</b>	Supplied with hanger bars, adjustable from 15"-242" to accommodate various joist construction and grid sizes.
<b>Cut Out:</b>	4 9/16"
<b>Ceiling Thickness:</b>	3/4"
<b>Operating Temp:</b>	-4°F to 104°F (-20°C to 40°C)
<b>Standards:</b>	UL, cUL, Damp Location Listed, Non IC



# WAC LIGHTING

## 4" Low Voltage

### Adjustable Step Baffle Trim

Model & Light Source	Lumens	Finish
HR-8411 LED MR16 ( Order separately ) HR-8411LED LED MR16 ( Included )		WT/WT White/White

Fixture Type: \_\_\_\_\_

Catalog Number: \_\_\_\_\_

Project: \_\_\_\_\_

Location: \_\_\_\_\_

Example: **HR-8411-WT/WT**

#### DESCRIPTION

Engineered for high-performance in a compact fixture, 4" Low Voltage Recessed Downlights are styled with form and function. Available for Non-IC installations, a variety of decorative adjustable and Wet Location trim options are available.

#### FEATURES

- Accommodates most LED MR16 lamps
- Center lamp holder allows lamp to be tilted up to 35° from vertical
- The supplied clear glass lens can be replaced with one lens accessory
- Steel spring clips secure trim to housing
- 5 year warranty

#### SPECIFICATIONS

<b>Construction</b>	20 gauge steel
<b>Input:</b>	12 VAC
<b>Light Source:</b>	LED MR16 ( Order separately ), LED MR16 ( Included )
<b>Finish:</b>	Electrostatically Powder Coated: White/White
<b>Standards:</b>	UL, cUL, Damp Location Listed



#### FINISHES:



White/White

# WAC LIGHTING

## 4" Low Voltage

### Die-Cast Adjustable Step Baffle Trim

Model & Light Source	Lumens	Finish
HR-D411 LED MR16 ( Order separately ) HR-D411 LED MR16 ( Included )		WT/WT White/White

Example: **HR-D411-WT/WT**

#### DESCRIPTION

Engineered for high-performance in a compact fixture, 4" Low Voltage Recessed Downlights are styled with form and function. Available for Non-IC installations, a variety of decorative adjustable and Wet Location trim options are available.

#### FEATURES

- Accommodates most LED MR16 lamps
- Center lamp holder allows lamp to be tilted up to 35° from vertical
- The supplied clear glass lens can be replaced with one lens accessory
- Steel spring clips secure trim to housing
- 5 year warranty

#### SPECIFICATIONS

<b>Construction</b>	Die-cast aluminum
<b>Input:</b>	12 VAC
<b>Light Source:</b>	LED MR16 ( Included ), LED MR16 ( Order separately )
<b>Finish:</b>	Electrostatically Powder Coated: White/White
<b>Standards:</b>	UL, cUL, Damp Location Listed

Fixture Type: \_\_\_\_\_

Catalog Number: \_\_\_\_\_

Project: \_\_\_\_\_

Location: \_\_\_\_\_



#### FINISHES:



White/White

# WAC LIGHTING

## 4" Low Voltage

### Die-Cast Adjustable Specular Square Trim

Model & Light Source	Lumens	Finish
HR-D412-S LED MR16 ( Order separately ) HR-D412LED-S LED MR16 ( Included )		SC/BN Specular Clear/Brushed Nickel SC/WT Specular Clear/White

Fixture Type: \_\_\_\_\_  
Catalog Number: \_\_\_\_\_  
Project: \_\_\_\_\_  
Location: \_\_\_\_\_

Example: **HR-D412-S-SC/BN**

#### DESCRIPTION

Engineered for high-performance in a compact fixture, 4" Low Voltage Recessed Downlights are styled with form and function. Available for Non-IC installations, a variety of decorative adjustable and Wet Location trim options are available.

#### FEATURES

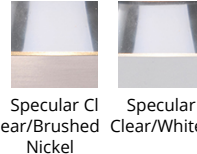
- Accommodates most LED MR16 lamps
- Center lamp holder allows lamp to be tilted up to 35° from vertical
- The supplied clear glass lens can be replaced with one lens accessory
- Steel spring clips secure trim to housing
- 5 year warranty

#### SPECIFICATIONS

<b>Construction</b>	Die-cast aluminum
<b>Input:</b>	12 VAC
<b>Light Source:</b>	LED MR16 ( Included ), LED MR16 ( Order separately )
<b>Finish:</b>	Electrostatically Powder Coated: Specular Clear/White, Electroplated Specular Clear/Brushed Nickel
<b>Standards:</b>	UL, cUL, Damp Location Listed



#### FINISHES:



# WAC LIGHTING

## 4" Low Voltage

### Die-Cast Adjustable Specular Round Trim

Model & Light Source	Lumens	Finish
HR-D412 LED MR16 ( Order separately ) HR-D412LED LED MR16 ( Included )		SC/BN Specular Clear/Brushed Nickel SC/WT Specular Clear/White

Fixture Type: \_\_\_\_\_  
Catalog Number: \_\_\_\_\_  
Project: \_\_\_\_\_  
Location: \_\_\_\_\_

Example: **HR-D412-SC/BN**

#### DESCRIPTION

Engineered for high-performance in a compact fixture, 4" Low Voltage Recessed Downlights are styled with form and function. Available for Non-IC installations, a variety of decorative adjustable and Wet Location trim options are available.

#### FEATURES

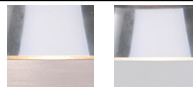
- Accommodates most LED MR16 lamps
- Center lamp holder allows lamp to be tilted up to 35° from vertical
- The supplied clear glass lens can be replaced with one lens accessory
- Steel spring clips secure trim to housing
- 5 year warranty

#### SPECIFICATIONS

<b>Construction</b>	Die-cast aluminum
<b>Input:</b>	12 VAC
<b>Light Source:</b>	LED MR16 ( Order separately ), LED MR16 ( Included )
<b>Finish:</b>	Electrostatically Powder Coated: Specular Clear/White, Electroplated Specular Clear/Brushed Nickel
<b>Standards:</b>	UL, cUL, Damp Location Listed



#### FINISHES:



Specular Clear/Brushed Nickel      Specular Clear/White

# WAC LIGHTING

## 4" Low Voltage

### Die-Cast Adjustable Slotted Trim

Model & Light Source	Lumens	Finish
HR-D413 LED MR16 ( Order separately ) HR-D413LED LED MR16 ( Included )		WT White

Fixture Type: \_\_\_\_\_  
Catalog Number: \_\_\_\_\_  
Project: \_\_\_\_\_  
Location: \_\_\_\_\_

Example: **HR-D413-WT**

#### DESCRIPTION

Engineered for high-performance in a compact fixture, 4" Low Voltage Recessed Downlights are styled with form and function. Available for Non-IC installations, a variety of decorative adjustable and Wet Location trim options are available.

#### FEATURES

- Accommodates most LED MR16 lamps
- Center lamp holder allows lamp to be tilted up to 35° from vertical
- The supplied clear glass lens can be replaced with one lens accessory
- Steel spring clips secure trim to housing
- 5 year warranty

#### SPECIFICATIONS

<b>Construction</b>	Die-cast aluminum
<b>Input:</b>	12 VAC
<b>Light Source:</b>	LED MR16 ( Order separately ), LED MR16 ( Included )
<b>Finish:</b>	Electrostatically Powder Coated: White
<b>Standards:</b>	UL, cUL, Damp Location Listed



#### FINISHES:



White

# WAC LIGHTING

## 4" Low Voltage

### Die-Cast Adjustable Square Trim

Model & Light Source	Lumens	Finish
HR-D416 LED MR16 ( Order separately ) HR-D416LED LED MR16 ( Included )		BN Brushed Nickel WT White

Example: **HR-D416-BN**

#### DESCRIPTION

Engineered for high-performance in a compact fixture, 4" Low Voltage Recessed Downlights are styled with form and function. Available for Non-IC installations, a variety of decorative adjustable and Wet Location trim options are available.

#### FEATURES

- Accommodates most LED MR16 lamps
- Center lamp holder allows lamp to be tilted up to 30° from vertical
- The supplied clear glass lens can be replaced with one lens accessory
- Steel spring clips secure trim to housing
- 5 year warranty

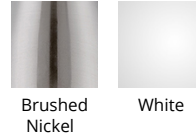
#### SPECIFICATIONS

<b>Construction</b>	Die-cast aluminum
<b>Input:</b>	12 VAC
<b>Light Source:</b>	LED MR16 ( Order separately ), LED MR16 ( Included )
<b>Finish:</b>	Electrostatically Powder Coated: White, Electroplated Brushed Nickel
<b>Standards:</b>	UL, cUL, Damp Location Listed

Fixture Type: \_\_\_\_\_  
Catalog Number: \_\_\_\_\_  
Project: \_\_\_\_\_  
Location: \_\_\_\_\_



#### FINISHES:



# WAC LIGHTING

## 4" Low Voltage

### Die-Cast Gimbal Ring Trim

Model & Light Source	Lumens	Finish
HR-D417 LED MR16 ( Order separately ) HR-D417LED LED MR16 ( Included )		BN Brushed Nickel WT White

Fixture Type: \_\_\_\_\_  
Catalog Number: \_\_\_\_\_  
Project: \_\_\_\_\_  
Location: \_\_\_\_\_

Example: **HR-D417-BN**

#### DESCRIPTION

Engineered for high-performance in a compact fixture, 4" Low Voltage Recessed Downlights are styled with form and function. Available for Non-IC installations, a variety of decorative adjustable and Wet Location trim options are available.

#### FEATURES

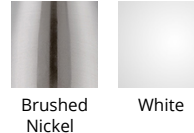
- Accommodates most LED MR16 lamps
- Center lamp holder allows lamp to be tilted up to 25° from vertical
- The supplied clear glass lens can be replaced with one lens accessory
- Steel spring clips secure trim to housing
- 5 year warranty

#### SPECIFICATIONS

<b>Construction</b>	Die-cast aluminum
<b>Input:</b>	12 VAC
<b>Light Source:</b>	LED MR16 ( Included ), LED MR16 ( Order separately )
<b>Finish:</b>	Electrostatically Powder Coated: White, Electroplated Brushed Nickel
<b>Standards:</b>	UL, cUL, Damp Location Listed



#### FINISHES:





# WAC LIGHTING

## 4" Low Voltage

### Die Cast Shower Trim Clear Flat Glass

Model & Light Source	Lumens	Finish
HR-D418-S LED MR16 ( Order separately ) HR-D418LED-S LED MR16 ( Included )		WT White

Fixture Type: \_\_\_\_\_  
Catalog Number: \_\_\_\_\_  
Project: \_\_\_\_\_  
Location: \_\_\_\_\_

Example: **HR-D418-S-WT**

#### DESCRIPTION

Engineered for high-performance in a compact fixture, 4" Low Voltage Recessed Downlights are styled with form and function. Available for Non-IC installations, a variety of decorative adjustable and Wet Location trim options are available.

#### FEATURES

- Accommodates most LED MR16 lamps
- Center lamp holder allows lamp to be tilted up to 35° from vertical
- The supplied clear glass lens can be replaced with one lens accessory
- Steel spring clips secure trim to housing
- 5 year warranty

#### SPECIFICATIONS

<b>Construction</b>	Die-cast aluminum
<b>Input:</b>	12 VAC
<b>Light Source:</b>	LED MR16 ( Included ), LED MR16 ( Order separately )
<b>Finish:</b>	Electrostatically Powder Coated: White
<b>Standards:</b>	UL, cUL, Wet Location Listed



#### FINISHES:



White

# WAC LIGHTING

## 4" Low Voltage

### Die-Cast Adjustable Round Trim

Model & Light Source	Lumens	Finish
HR-D425 LED MR16 ( Order separately ) HR-D425LED LED MR16 ( Included )		WT White

Fixture Type: \_\_\_\_\_  
Catalog Number: \_\_\_\_\_  
Project: \_\_\_\_\_  
Location: \_\_\_\_\_

Example: **HR-D425-WT**

#### DESCRIPTION

Engineered for high-performance in a compact fixture, 4" Low Voltage Recessed Downlights are styled with form and function. Available for Non-IC installations, a variety of decorative adjustable and Wet Location trim options are available.

#### FEATURES

- Accommodates most LED MR16 lamps
- Center lamp holder allows lamp to be tilted up to 80° from vertical
- The supplied clear glass lens can be replaced with one lens accessory
- Steel spring clips secure trim to housing
- 5 year warranty

#### SPECIFICATIONS

<b>Construction</b>	Die-cast aluminum
<b>Input:</b>	12 VAC
<b>Light Source:</b>	LED MR16 ( Included ), LED MR16 ( Order separately )
<b>Finish:</b>	Electrostatically Powder Coated: White
<b>Standards:</b>	UL, cUL, Damp Location Listed



#### FINISHES:



White