

WAC LIGHTING

4" Low Voltage

Die-Cast Adjustable Slotted Trim

Model & Light Source	Lumens	Finish
HR-D413 LED MR16 (Order separately) HR-D413LED LED MR16 (Included)		WT White

Fixture Type: _____
Catalog Number: _____
Project: _____
Location: _____

Example: **HR-D413-WT**

DESCRIPTION

Engineered for high-performance in a compact fixture, 4" Low Voltage Recessed Downlights are styled with form and function. Available for Non-IC installations, a variety of decorative adjustable and Wet Location trim options are available.

FEATURES

- Accommodates most LED MR16 lamps
- Center lamp holder allows lamp to be tilted up to 35° from vertical
- The supplied clear glass lens can be replaced with one lens accessory
- Steel spring clips secure trim to housing
- 5 year warranty

SPECIFICATIONS

Construction	Die-cast aluminum
Input:	12 VAC
Light Source:	LED MR16 (Order separately), LED MR16 (Included)
Finish:	Electrostatically Powder Coated: White
Standards:	UL, cUL, Damp Location Listed



FINISHES:



White

WAC LIGHTING

4" Low Voltage

Remodel Non-IC Housing

Model & Product

HR-8401E 4in Electronic Low Voltage Remodel Non-IC Housing

Fixture Type: _____

Catalog Number: _____

Project: _____

Location: _____

Example: **HR-8401E**

DESCRIPTION

Engineered for high-performance in a compact fixture, 4" Low Voltage Recessed Downlights are styled with form and function. Available with a variety of decorative adjustable and wet location trim options are available.

FEATURES

- Integral electronic transformer
- J-Box and transformer accessible through ceiling
- Advanced auto-reset, soft start and short circuit protection features
- Supplied thermal protector protects against over-lamping
- Suitable for 2" x 6" joist installations, for use in shallow applications
- Accommodates most LED MR16 or Halogen MR16 lamps
- Transformer included
- 5 year warranty

SPECIFICATIONS

Construction	20 gauge galvanized steel
Input:	120 VAC, 50/60Hz
Dimming:	ELV: 100-10%
Light Source:	Halogen, LED (1W min)
Mounting:	Two heavy gauge inner retention clips push out onto ceiling or other mounting surface to firmly hold housing in place
Cut Out:	4 9/16"
Ceiling Thickness:	3/4"
Operating Temp:	-4°F to 104°F (-20°C to 40°C)
Standards:	UL, cUL, Damp Location Listed, Non IC



WAC LIGHTING

4" Low Voltage

New Construction Non-IC Housing

Model & Product

HR-8402E 4in Electronic Low Voltage New Construction Non-IC Housing

Fixture Type: _____

Catalog Number: _____

Project: _____

Location: _____

Example: **HR-8402E**

DESCRIPTION

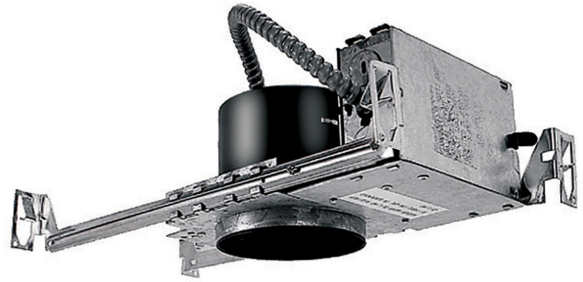
Engineered for high-performance in a compact fixture, 4" Low Voltage Recessed Downlights are styled with form and function. Available with a variety of decorative adjustable and Wet Location trim options are available.

FEATURES

- Integral electronic transformer
- J-Box and transformer accessible through ceiling
- Advanced auto-reset, soft start and short circuit protection features
- Supplied thermal protector protects against over-lamping
- Transformer included
- 5 year warranty

SPECIFICATIONS

Construction	20 gauge galvanized steel
Power:	50W
Input:	120 VAC,50/60Hz
Dimming:	ELV: 100-10%
Light Source:	Halogen
Mounting:	Supplied with hanger bars, adjustable from 15"-242" to accommodate various joist construction and grid sizes.
Cut Out:	4 9/16"
Ceiling Thickness:	3/4"
Operating Temp:	-4°F to 104°F (-20°C to 40°C)
Standards:	UL, cUL, Damp Location Listed, Non IC



WAC LIGHTING

4" Low Voltage

New Construction Non-IC Housing

Fixture Type: _____
 Catalog Number: _____
 Project: _____
 Location: _____

ACCESSORIES

	<i>Model</i>	<i>Description</i>	<i>Finish</i>
	LENS-16-RED LENS-16-GRN LENS-16-BLU LENS-16-AMB	Colored Lens Colored Lens Colored Lens Colored Lens	Red Green Blue Amber
	LENS-16-FR	Clear/Frosted Lens	Frosted
	LENS-16-SPR	Spread Lens	Spread Lens
	LENS-16-UVF	UV Filter lens	Clear
	LENS-16-BEL	Beam Elongating Lens	Beam Elongating
	LENS-16-HCL	Honeycomb Louver	Black