

# WAC LIGHTING

## Ocularc 3.0

### Polycarbonate Downlight Round

Fixture Type: \_\_\_\_\_  
Catalog Number: \_\_\_\_\_  
Project: \_\_\_\_\_  
Location: \_\_\_\_\_

Model	Beam	Color Temp & CRI	Lumens	CBCP	Finish
R3BRDP	F 50°	927 2700K - 90	950	1294	WT White
		930 3000K - 90	1015	1382	
	N 25°	927 2700K - 90	950	2778	
		930 3000K - 90	1025	2985	
	S 15°	927 2700K - 90	955	4918	
		930 3000K - 90	1005	5144	

Example: **R3BRDP-F927-WT**

#### DESCRIPTION

Engineered with state of the art LED and driver technology, Ocularc 3.0, 2.0, 1.0 family of recessed lighting offers various styles, IC and Airtight Rated New Construction and Remodel, and low glare optical distributions to beautifully illuminate a diverse range of applications.

#### FEATURES

- Shallow housing under 4in depth
- Single spot light source
- Conforms to local code dead front requirements
- 5 year warranty

#### SPECIFICATIONS

<b>Construction</b>	Polycarbonate trim and die-cast aluminum heat sink
<b>Power:</b>	11W
<b>Light Source:</b>	Integrated LED, 3 Step Mac Adam Ellipse
<b>Rated Life:</b>	50,000 Hours
<b>Mounting:</b>	Heavy gauge retention clips support trim firmly
<b>Finish:</b>	Electrostatically Powder Coated: White
<b>Operating Temp:</b>	-4°F to 104°F (-20°C to 40°C)
<b>Standards:</b>	ETL, cETL, Wet Location Listed, Energy Star 2.0, Title 24 JA8 Compliant, Airtight

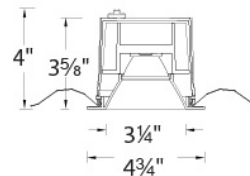


#### FINISHES:



White

#### LINE DRAWING



# WAC LIGHTING

## Ocularc 3.0

### Remodel Housing

Model & Product

R3BBRT-10 Ocularc 3.0 LED Remodel IC-Rated Housing

Fixture Type: \_\_\_\_\_

Catalog Number: \_\_\_\_\_

Project: \_\_\_\_\_

Location: \_\_\_\_\_

Example: **R3BBRT-10**

#### DESCRIPTION

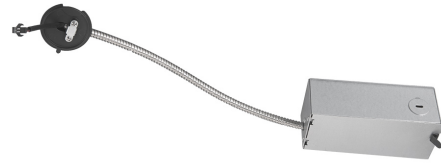
Engineered with state of the art LED and driver technology, Ocularc 3.0, 2.0, 1.0 family of recessed lighting offers various styles, IC and Airtight Rated New Construction and Remodel, and low glare optical distributions to beautifully illuminate a diverse range of applications.

#### FEATURES

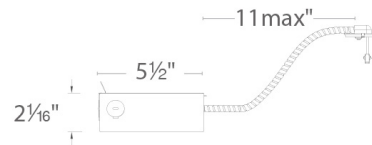
- Shallow housing under 4in depth
- Driver concealed within the fixture
- 5 year warranty

#### SPECIFICATIONS

<b>Construction</b>	20 gauge cold rolled steel wiring box
<b>Power:</b>	11W
<b>Input:</b>	120 -277 VAC,50/60Hz
<b>Dimming:</b>	ELV: 100-5% , 0-10V: 100-5% , TRIAC: 100-5%
<b>Rated Life:</b>	50,000 Hours
<b>Mounting:</b>	Heavy gauge retention clips secures housing firmly to ceiling
<b>Cut Out:</b>	4 1/4"
<b>Ceiling Thickness:</b>	1/2" - 1"
<b>Operating Temp:</b>	-4°F to 104°F (-20°C to 40°C)
<b>Standards:</b>	ETL, cETL, IC



#### LINE DRAWING



# WAC LIGHTING

## Ocularc 3.0

### New Construction Housing

#### Model

R3BNICA-10 Ocularc 3.0 LED New Construction IC-Rated Airtight Housing (120V)  
R3BNICA-10U Ocularc 3.0 LED New Construction IC-Rated Airtight Housing (120-277V)  
R3BNICA-10U-EM Ocularc 3.0 LED New Construction IC-Rated Airtight Housing (120-277V)

Fixture Type: \_\_\_\_\_

Catalog Number: \_\_\_\_\_

Project: \_\_\_\_\_

Location: \_\_\_\_\_

Example: **R3BNICA-10**

#### DESCRIPTION

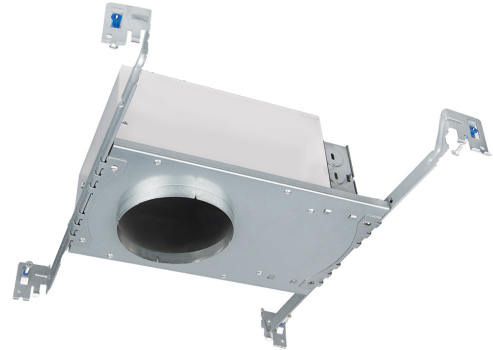
Engineered with state of the art LED and driver technology, Ocularc 3.0, 2.0, 1.0 family of recessed lighting offers various styles, IC and Airtight Rated New Construction and Remodel, and low glare optical distributions to beautifully illuminate a diverse range of applications.

#### FEATURES

- Shallow housing under 4in depth
- Driver concealed within the fixture
- 5 year warranty

#### SPECIFICATIONS

<b>Construction</b>	20 gauge cold rolled steel wiring box
<b>Power:</b>	11W
<b>Input:</b>	120 VAC, 120-277 VAC, 50/60Hz
<b>Dimming:</b>	YES
<b>Rated Life:</b>	50,000 Hours
<b>Mounting:</b>	Heavy gauge retention clips secures housing firmly to ceiling
<b>Cut Out:</b>	4 1/4"
<b>Ceiling Thickness:</b>	1/2" - 1"
<b>Operating Temp:</b>	-4°F to 104°F (-20°C to 40°C)
<b>Standards:</b>	ETL, cETL, Airtight, IC



#### LINE DRAWING

