

# WAC LIGHTING

## VENTRIX

### Recessed Trimless Feed End Junction Box

Model & Product

S2CL-FEB VENTRIX Recessed Trimless Feed End Junction Box

Fixture Type: \_\_\_\_\_

Catalog Number: \_\_\_\_\_

Project: \_\_\_\_\_

Location: \_\_\_\_\_

Example: **S2CL-FEB**

#### DESCRIPTION

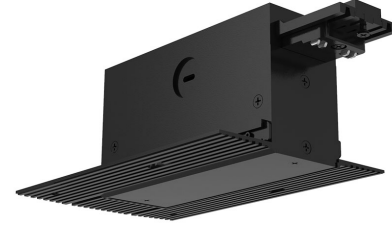
The only lighting, power, and control system complete with lighting elements designed for discriminating performance. Configure VENTRIX for your retail, restaurant, commercial office, or residential lighting plan.

#### FEATURES

- Feed end junction box
- Includes (1) black and (1) white cover plate
- Side knockouts accommodate feed on up to 1" ceiling thickness
- 5 year warranty

#### SPECIFICATIONS

<b>Construction</b>	Extruded aluminum
<b>Mounting:</b>	Can be mounted on ceiling or wall vertically or horizontally
<b>Finish:</b>	Electrostatically Powder Coated
<b>Standards:</b>	UL, cUL, Dry Location Listed



#### LINE DRAWING

