

Fixture Type: _____
 Catalog Number: _____
 Project: _____
 Location: _____

VENTRIX

Recessed Grid L Connector

| Model | Finish | Description |
|---------|----------|---|
| S2CG1-L | WT White | Recessed 15/16 Lay-in Grid L Connector |
| S2CG2-L | | Recessed 15/16 Tegular Grid L Connector |
| S2CG3-L | | Recessed 9/16 Lay-in Grid L Connector |
| S2CG4-L | | Recessed 9/16 Slot Grid L Connector |
| S2CG5-L | | Recessed 9/16 Tegular Grid L Connector |

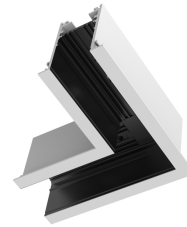
Example: **S2CG1-L-WT**

DESCRIPTION

The only lighting, power, and control system complete with lighting elements designed for discriminating performance. Configure VENTRIX for your retail, restaurant, commercial office, or residential lighting plan.

FEATURES

- Heavy duty grade 48VDC trim recessed channel with signal controllable circuits.
- Operating Current: Max circuit is rated 12.5A
- Magnetic infrastructure allows you to slide elements within the VENTRIX and adjust lighting effects while powered
- Black copper bus bars for power and communications
- 5 Year warranty



SPECIFICATIONS

| | |
|---------------------|--|
| Construction | Extruded aluminum with solid copper alloy bus bars |
| Input: | 48 VDC |
| Mounting: | Recessed onto grid ceiling |
| Finish: | Electrostatically Powder Coated: White |
| Standards: | UL, cUL, Dry Location Listed, IC |

FINISHES:



White