

# INSTALLATION INSTRUCTION

## Volta 2" Tunable White - Remodel Housing R2BRT



### SAFETY INSTRUCTION

IMPORTANT: Never attempt any work without shutting off the electricity.

- Read all instructions before installing.
- System is intended for installation by a qualified electrician in accordance with the National Electrical Code and local regulations.
- Go to the main fuse box, or circuit breaker. Place the main power switch in the "OFF" position and unscrew the fuse(s) or switch "OFF" the circuit breaker switch(es) that control the power to the fixture or room that you are working on.
- Place the wall switch in the "OFF" position.

### AVERTISSEMENT

IMPORTANT: Coupez l'électricité avant TOUTE manipulation.

- Lisez toutes les instructions avant d'installer.
- Système est destiné à être installé par un électricien qualifié en conformité avec le code national de l'électricité et les règlements locaux.
- Accédez au panneau central de disjoncteurs ou de fusibles de votre demeure et placez l'interrupteur principal en position d'arrêt (« OFF »).
- Placez l'interrupteur mural en position d'arrêt (« OFF »).

### CAUTION:

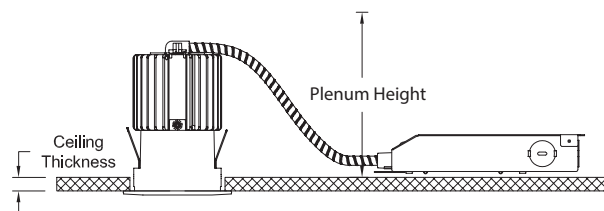
All parts must be used as indicated in these instructions. Do not substitute any parts, leave parts out, or use any parts that are worn out or broken. Failure to follow this instruction could invalidate the ETL/cETL listing of this fixture.

### OVERVIEW:

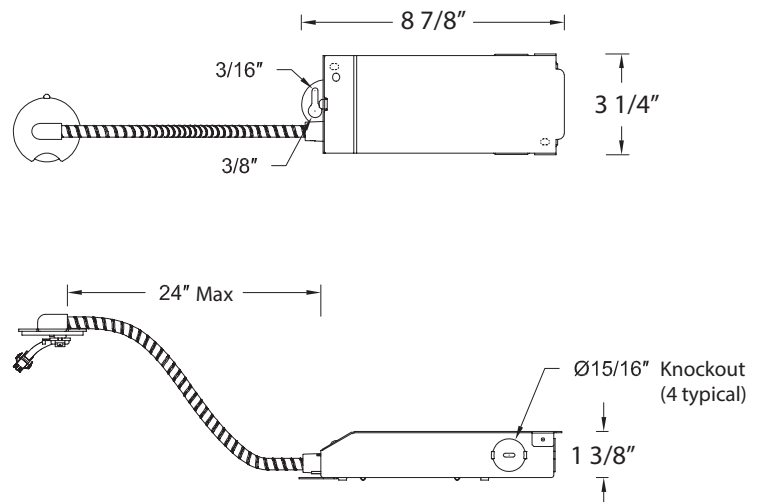
Housing is remodel Non-IC. Housing requires a trim for a finished look. Refer to specification sheets for compatible trim options.

### INSTALLATION REQUIREMENT

Ceiling Thickness	Minimum Required Plenum Height
1/2"	7"
1"	6.5"
1 1/2"	6"



### OVERALL HOUSING DIMENSION



SPECIFICATIONS	
Input:	120-277V, 50/60Hz
Installation:	Non-IC
Dimming	DMX for T-X model 0-10V for T-Z model

wacighting.com  
Phone (800) 526.2588  
Fax (800) 526.2585

Headquarters, East Manufacturing Facility  
44 Harbor Park Drive  
Port Washington, NY 11050

South East Manufacturing Facility  
1600 Distribution Ct  
Lithia Springs, GA 30122

Central Manufacturing Facility  
1700 South J Elmer Freeway, Ste 100  
Cedar Hill, TX 75104

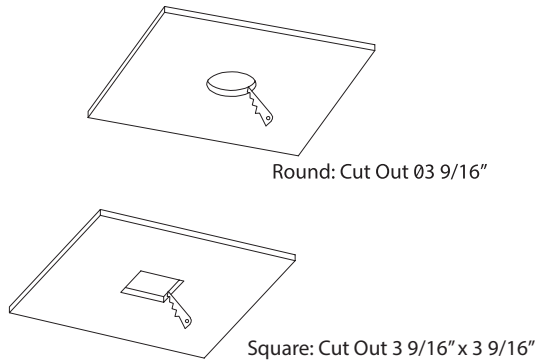
West Manufacturing Facility  
1750 S Archibald Ave  
Ontario, CA 91761

# INSTALLATION INSTRUCTION

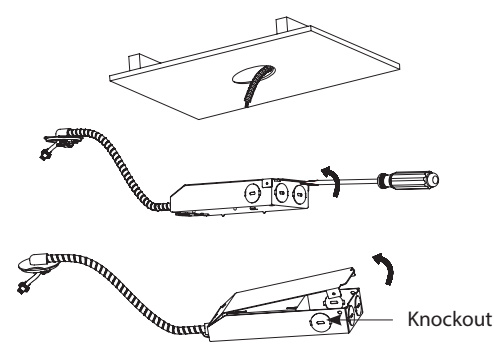
## Volta 2" Tunable White - Remodel Housing R2BRT



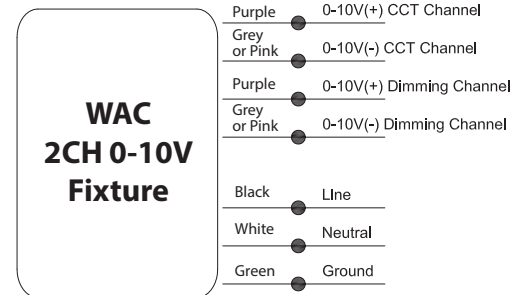
**FIG. 1**



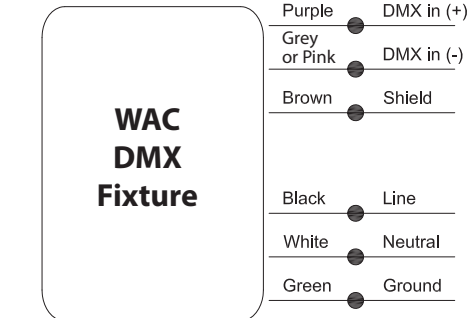
**FIG. 2**



**FIG. 3**



**FIG. 4**



### HOUSING INSTALLATION:

- At the point of installation, cut a 3 9/16" round hole for a round trim or a 3 9/16" X 3 9/16" square hole for a square trim (See **FIG. 1**).

**Note:** Ceiling thickness table below.

### TRIMMED INSTALLATION

Trim Model	Trim Description	Ceiling Thickness		
		1/2"	1"	1 1/2"
<b>R2RD2T, R2SD2T</b>	Downlight	Yes	Yes	Yes
<b>R2RD1T, R2SD1T</b>	Shallow Regressed Trim	Yes	Yes	Yes
<b>R2RAT, R2SAT R2RPT, R2SPT</b>	Adjustable/ Pinhole	Yes, to 45°	Yes, to 35°	Yes, to 20°
<b>R2RWT, R2SWT</b>	Wall Wash	Yes	Yes	No

- Pull building supply wires through ceiling cutout and open fixture junction box door (See **FIG. 2**).  
  
Remove desired housing knockout and feed building wires into housing using appropriate connector.
- Connect fixture wires to building wires: insert each supply wire into appropriate connector.

- For 0-10V control [**T-Z** models] (See **FIG. 3**):  
Two 0-10V input signals are used to achieve CCT and intensity changing. Recommended maximum of 500ft of 18 ga 0-10V communication wiring.
- For DMX control [**T-X** models] (See **FIG. 4**):  
Two DMX input channels are used to achieve CCT and intensity changing. Factory default Channel 1 is intensity changing and Channel 2 is CCT changing. If differing channels are desired in the field, use of a RDM compatible control console can reassign channels.

It is recommended to use cable specifically designed for DMX. These cables have an impedance of 120Ω and a low capacitance. For instance: Belden 9841 or 3105a. At the last fixture, the cable to be terminated with a 120Ω resistor between the DMX (+) and DMX (-) pinouts to prevent reflections of the signal. The resistor value of the resistor on the last driver should be kept the same as the resistor of signal wires.

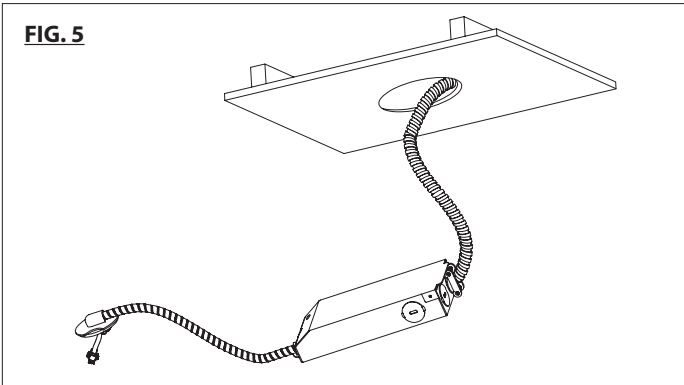
Recommended maximum of 500ft of cabling from controller to last fixture. After 32 unit loads a repeater/booster is recommended.

## INSTALLATION INSTRUCTION

### Volta 2" Tunable White - Remodel Housing R2BRT

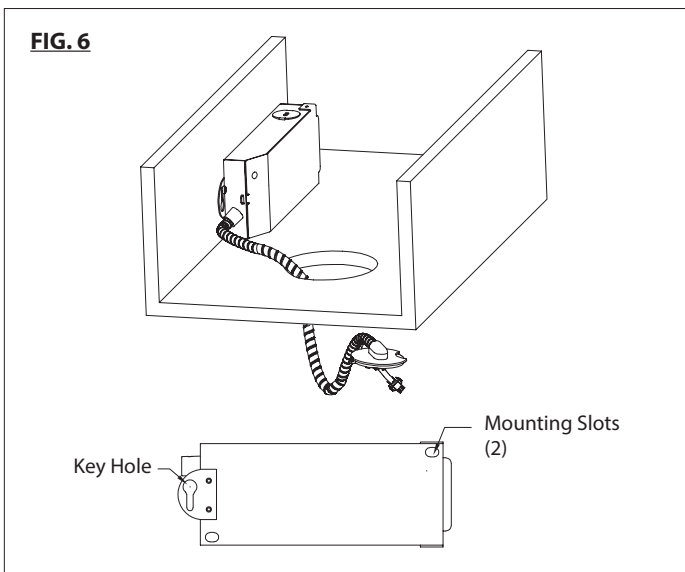


**FIG. 5**



4. Place all wiring and connectors back in junction box and replace the junction box's cover (See **FIG. 5**).

**FIG. 6**



5. Guide junction box through the cut hole and secure appropriately using either internal mounting slots or external key hole (See **FIG. 6**).
6. Refer to installation instructions for appropriate trims to complete the installation.