

# 1" INGROUND - SHROUD

1031

WAC

LANDSCAPE LIGHTING

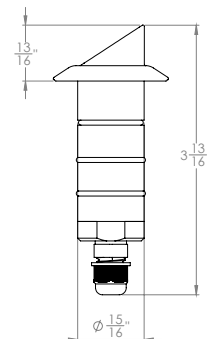
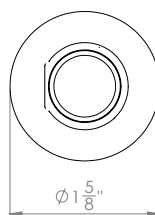


Fixture Type:

Catalog Number:

Project:

Location:



## PRODUCT DESCRIPTION

Landscape 1" recessed inground luminaire for up, down, side light applications.

## FEATURES

- IP68 rated, Suitable for continuous immersion under water
- Factory sealed water tight fixtures
- Solid stainless steel construction
- Stainless steel spring clip allows wall or downlight applications
- Available Concrete Pour Adapter
- Spring clip, 6' lead wire and direct burial gel filled wire nuts included
- Maintains constant lumen output against voltage drop
- UL 1838 Listed

## SPECIFICATIONS

**Input:** 9 - 15VAC (Transformer is required)  
**Power:** 1.9W / 3VA (Use VA value for sizing the transformer and calculate voltage drop.)  
**Brightness:** 80 lm  
**Beam Angle:** 45°  
**CRI:** 85  
**Rated Life:** 70,000 hours

## ORDERING NUMBER

		Color Temp		Finish	
1031	Shroud	27	2700K	BS	Bronzed Stainless Steel
		30	3000K	SS	Stainless Steel

1031-30SS

wacighting.com

Phone (800) 526.2588

Fax (800) 526.2585

Headquarters, East Manufacturing Facility

44 Harbor Park Drive

Port Washington, NY 11050

South East Manufacturing Facility

1600 Distribution Ct

Lithia Springs, GA 30122

Central Manufacturing Facility

1700 South J Elmer Freeway, Ste 100

Cedar Hill, TX 75104

West Manufacturing Facility

1750 S Archibald Ave

Ontario, CA 91761

# 1" INGROUND - SHROUD

1031

# WAC

## LANDSCAPE LIGHTING

### Magnetic Transformers



*Stainless Steel, 12-15V output, IP65 rated, UL 1838 listed See transformer spec sheet for details and its accessories*

**9075-TRN-SS**  
75W Max

**9150-TRN-SS**  
150W Max

**9300-TRN-SS**  
300W Max

**9600-TRN-SS**  
600W Max

### 1" Concrete Pour Adapter



*For installation in concrete.  
Use with a 4" outdoor rated junction box  
and a trade size 1" schedule 80 PVC pipe*

**1000-CON-PVC**

### TESTED MAGNETIC LOW VOLTAGE (MLV) DIMMERS

Luminaire	Dimmer					
	Manufacturer	Family	Model	Power Rating	Range*	Note
<b>1031</b>	Lutron	Diva	DVLV-600	600W	28% - 100%	Output maxes at 70% dimming level
		Skylark	SLV-600P	600W	20% - 100%	Output maxes at 70% dimming level
		Skylark	S-10P	1000W		Not recommended

\*Low end of this range is determined by output current which may not directly translate to the perceived light output

WAC Lighting fixtures are compatible with a variety of dimmers. For your convenience we have included a compatibility chart showing dimmers which have been tested with our products. The recommended list below is based upon testing conducted in a lab, and the results can vary in certain field applications due to a number of factors. Exclusion from the list does not imply incompatibility, just that it has not been tested by WAC Lighting. Please reference the dimmer manufacturer's instructions for installation, or contact a WAC lighting professional at 800-526-2588.

wacighting.com  
Phone (800) 526.2588  
Fax (800) 526.2585

Headquarters, East Manufacturing Facility  
44 Harbor Park Drive  
Port Washington, NY 11050

South East Manufacturing Facility  
1600 Distribution Ct  
Lithia Springs, GA 30122

Central Manufacturing Facility  
1700 South J Elmer Freeway, Ste 100  
Cedar Hill, TX 75104

West Manufacturing Facility  
1750 S Archibald Ave  
Ontario, CA 91761