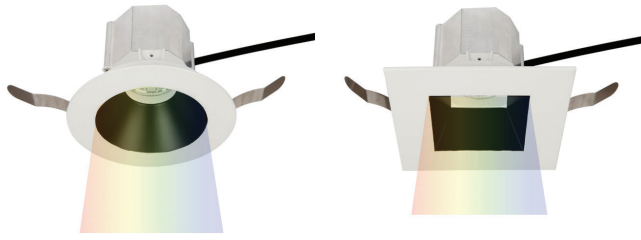


AETHER 3.5" - Color Changing Downlight Trim

R3ARDT, R3ASDT



Fixture Type:

Catalog Number:

Project:

Location:

PRODUCT DESCRIPTION

Aether Color Changing is a high-performance recessed downlight with a state-of-the-art color and CCT tuning LED controlled by DMX-512A and 0-10V technology. Available in a variety of trim options including a sleek trimless option which can be spackled directly up to the aperture. At 3.5" in housing height, Aether is designed to fit the most difficult tight plenum spaces.

FEATURES

- Shallow housing that is designed to fit in tight plenum spaces without sacrificing lumen output
- 3.5" trim aperture and 3.5" housing height
- Full color gamut control through gradients of saturated colors from 1-100%
- Tunable White (CCT) Range: 1650-8000K
- DMX512-A CCT and color control with commissioning via RDM; dimming via DMX-512A or 0-10V
- Sold as a complete unit; housing and trim included

SPECIFICATIONS

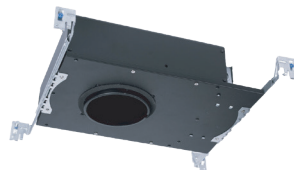
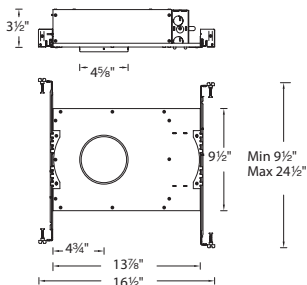
- Construction:** Die-cast aluminum trim with extruded aluminum heat sink
- Dimming:** 100% - 1% intensity control in CCT & color via DMX or 0-10V
- Input:** Universal 120 - 277VAC, 50/60 Hz
- Power:** 22W, power factor 0.98
- Control:** 0-10V, DMX512-A with DMX commissioning via RDM
- Mounting:** Retention clips firmly hold trim to housing
- Finish:** Powder Coated White and Black, Enamel Coated Haze
- Ceiling thickness:** ½" - 1½"
- Standards:** ETL & cETL Listed, wet location listed trims

Trim	Model	Beam	Color Temp	Delivered Lumens at 3000K	CBCP at 3000K	Finishes
	R3ARDT Round, Downlight Wet Location	N 25° F 40°	CC24 Color Changing	615 690	2265 1285	BK Black BKWT Black/White HZWT Haze/White WT White
	R3ASDT Square, Downlight Wet Location	N 25° F 40°	CC24 Color Changing	630 695	2265 1305	BK Black BKWT Black/White HZWT Haze/White WT White

R3A_DT-CC24-

Example: **R3ARDT-NCC24-HZWT**

Housing (Sold as complete unit) New Construction, IC Rated, Airtight Housing



wacighting.com

Phone (800) 526.2588

Fax (800) 526.2585

Headquarters, East Manufacturing Facility

44 Harbor Park Drive

Port Washington, NY 11050

South East Manufacturing Facility

1600 Distribution Ct

Lithia Springs, GA 30122

Central Manufacturing Facility

1700 South J Elmer Freeway, Ste 100

Cedar Hill, TX 75104

West Manufacturing Facility

1750 S Archibald Ave

Ontario, CA 91761